



FREEDOM EVERYLIFT

EVERYDAY TRANSFER AID



www.mobilepatientlift.com



info@climbingsteps.com



+1 (212) 366-5483

MP-P11

Table of Contents

I. Safety Instruction	01
II. Product Information	03
III. Product Overview	04
IV. Installation Guide	05
V. Operating Instructions	08
VI. Troubleshooting	11
VII. After-Sales Service	12

Product Name: Freedom EveryLift

Model: MP-P11

WARNING:

1. The MP-P11 is intended for its designed purpose only. Do not use it for any other purposes.
2. During use and maintenance, do not insert your hand into the U-shaped slot of the rod to avoid pinching injuries or other safety risks.
3. Do not disassemble or modify the MP-P11 on your own. Unauthorized modifications may result in product damage and create safety hazards.
4. When the product is not in use, it is recommended to engage the brake on the wheels to prevent the product from sliding or rolling, which may cause safety risks.

 **Manufacturer:** Climbing Steps, Inc.

 **Address:** 6601 Lyons Rd, Suite C10. Coconut Creek, FL. 33073.

 **Service Hotline:** (212) 366-5483

 **Email:** info@climbingsteps.com

Weight Capacity: 330 lb

Frame Material: Steel

Base Height: 5.9 in

Base Length: 31.9 in

Base Width: 22.8 in



Corresponding to the UDI label



(Read the User Guide for Other Details)

I.Product Information



Product Name

Freedom EveryLift



Purpose

This product is a motor-driven transfer assist device, specifically designed for seniors, individuals with disabilities, and those with insufficient physical strength after surgery. Its purpose is to facilitate safe transfers between a bed and other equipment such as wheelchairs or commode chairs. Utilizing a lifting system and a weight-bearing sling structure, this product assists users with short-distance transfers between sitting and lying positions within home, hospital, or care facility environments. This effectively helps prevent issues such as falls and muscle strains caused by improper manual handling during transfers. The product is convenient for caregivers to operate and is widely applicable for various settings, including home care, rehabilitation facilities, and medical units.



Product Features

- Suitable for transfer scenarios such as bedroom to bathroom, bathroom to living room, and indoor to vehicle. The sling is thoughtfully designed to assist caregivers in safely transferring patients or individuals with disabilities to vehicles, wheelchairs, sofas, and other settings with ease.
- The unique base expansion and contraction design accommodates different seat and wheelchair widths, making it equally effective for spacious vehicles.
- The product is foldable and compact, making it convenient to carry during outings and providing mobility assistance anytime, anywhere.
- The height range of the sling seat cushion from the ground is 37–72 cm (14.6–28.3 in), making it compatible with vehicles of various heights to ensure seamless transfers.

Technical Specifications

Product Model:	Freedom EveryLift (MP-P11)	Seat Material:	Nylon + EVR
Net Weight:	32.3 kg / 71.2 lb	Armrest Material:	Nylon on both sides, PU foam on the front
Weight Capacity:	150 kg / 330 lb	Input Voltage:	100-240V AC 50/60Hz
Caster Size:	10 cm / 4 in	Output Voltage:	DC 25.2V = 1A
Base Height:	15 cm / 5.9 in	Battery Type/Capacity:	22.2V / 2AH
Base Length:	81 cm / 31.9 in	Lifting Speed:	9 mm/s
Base Width:	58 cm / 22.8 in	Waterproof Rating:	IP54
Overall Height Range:	100-135 cm (39.4-53.2 in)	Sling Width:	45 cm /17.7 in
Legs Adjustment Width Range:	50-84.5 cm (19.7-33.3 in)	Sling Length:	49.5 cm /19.5 in (excluding hanging straps)
Frame Material:	Steel	Hanging Strap Length:	59.5 cm /23.4 in

II. Safety Instructions

Important Notice

- Thank you for choosing our product. Throughout this guide, we will use the model name **MP-P11** as a shortened reference for the full product name, *Freedom EveryLift Everyday Transfer Aid*. Please keep this in mind as you review the information provided.
- To ensure a better user experience, please carefully read the instruction manual before using the MP-P11 for the first time. It will guide you through the assembly and proper use of the MP-P11.
- Keep this manual for future reference and provide it to anyone who may use or handle the product.
- Before each use, check the display on the control box to ensure that the MP-P11 has sufficient battery power.
- Under normal conditions, the battery retains approximately 25% of its charge. If the device has not been used for an extended period, the battery may naturally discharge. After assembly, it is recommended to charge the device to ensure adequate power.
- Before use, make sure the control handle is properly connected to the control box before operating the MP-P11.

General Safety Warnings

- Before installation and use, please ensure that all components and accessories are complete, intact, and undamaged. If any issues are found, do not use the product and contact us immediately at info@climbingsteps.com.
- Before use, assess whether the user is suitable for the product, considering factors such as weight, body type, cognitive ability, and joint mobility. Users who are not suitable should not use the MP-P11 to avoid injury. Individuals with disabilities should only use the product when accompanied by a companion or with an alarm system in place.
- Before use, ensure that the environment meets the requirements. This should be confirmed by the user or a professional.
- This package contains plastic bags. To avoid the risk of suffocation, keep plastic bags out of reach of children. Plastic bags are not toys and must not be handled by infants or toddlers.
- If the product comes into contact with water, disconnect the power immediately to prevent damage. Dry the product thoroughly before reconnecting it to the power supply.
- Before use, check the surroundings of the MP-P11 to ensure there are no obstacles and verify that the moving parts of the MP-P11 are not obstructed by any objects. This will prevent potential damage to the product and minimize the risk of personal injury.

Operation Warnings

- Do not overload the MP-P11. The maximum weight capacity of the MP-P11 is **150 kg (330 lb)**. Exceeding this limit may cause product damage or pose a safety risk.
- The MP-P11 is intended for its designed purpose only. Do not use it for any other purposes.
- During use and maintenance, do not insert your hand into the U-shaped slot of the rod to avoid pinching injuries or other safety risks.
- The MP-P11 is not a toy and should not be operated by children.
- Do not disassemble or modify the MP-P11 on your own. Unauthorized modifications may result in product damage and create safety hazards.
- When the product is not in use, it is recommended to engage the brake on the wheels to prevent the product from sliding or rolling, which may cause safety risks.
- Do not use the MP-P11 while bathing to avoid potential product damage and safety hazards.
- Do not use the MP-P11 during the charging process to avoid potential product damage and safety risks.
- Ensure that the backrest is properly installed before use to avoid any safety risks.

Battery Safety Warnings

- This product contains a battery and must not be disassembled. Unauthorized disassembly may result in product damage or personal injury.
- Do not place this product near heat sources or water sources to prevent damage or safety hazards.
- Always use the dedicated Power Adapter provided with this product for charging. This charger is specifically designed for this purpose and must not be used with other devices to avoid potential damage or safety risks.
- Disassembling the Power Adapter is strictly prohibited. Unauthorized disassembly may result in product damage or personal injury.

- Do not charge the device near water sources, heat sources, or similar environments.
- If the device will not be used for an extended period, disconnect the power and charge the battery once every two weeks to prolong its lifespan and prevent battery degradation.
- This product has an IP54 waterproof rating and is not suitable for use or storage in heavy rain, snow, freezing conditions, or other harsh weather environments. Long-term exposure to humid conditions may result in electrical failures, causing product damage and potential safety risks.

Electromagnetic Interference and Compatibility Declaration (EMI) (EMC)

This product has been designed and tested in accordance with relevant international and national standards to ensure compliance with electromagnetic interference (EMI) and electromagnetic compatibility (EMC) requirements. The details of this declaration are as follows:

- **1. General Compliance Declaration**

This product complies with the following electromagnetic interference and electromagnetic compatibility standards:

EN 55014-1, EN 55014-1-2 (Standards for the electromagnetic compatibility of household appliances, electric tools, and similar devices).

- **2. User Information and Warnings**

The use of non-compliant accessories or unauthorized modifications may result in reduced electromagnetic compatibility and impact the performance of the device.

If the device is affected by external electromagnetic interference or interferes with the normal operation of other devices, please immediately adjust the device's position or discontinue use.

- **3. Scope of Declaration**

This declaration applies to the use of this product in typical household, medical, and commercial electromagnetic environments. The product should not be used in special electromagnetic environments.

- **4. Declaration Limitations**

The company assumes no responsibility for any damage or performance degradation of the product caused by improper use or use in special environments that do not follow the operating instructions.

Maintenance and Care

- Users should regularly check the device to ensure it is functioning properly.
- It is recommended to wipe the seat cushion with a soft cotton cloth and alcohol before use. If disinfection is needed after cleaning, use medical alcohol or other non-corrosive disinfectants to clean the device's exterior and accessories.
- Before cleaning the product, please disconnect the power.
- Do not immerse the product or its accessories in liquid for cleaning or disinfection.
- When cleaning the product, use a soft cloth, alcohol or non-corrosive cleaner, and a non-corrosive disinfectant. Gently wipe the surfaces to avoid scratching.
- Only use the product once the detergent and disinfectant have fully dried.



Notice

If you notice any visible damage, unusual sounds, or malfunctions, please stop using the product immediately. Refer to the Troubleshooting section for assistance. If the issue persists, please contact us immediately at info@climbingsteps.com. Thank you.

III. Product Overview

- Lift



Product Components






- 01. Control Handle
- 02. Armrest
- 03. Leg Spreader Handle
- 04. Main Shaft Section
- 05. Base
- 06. Rear Casters (with Brake)
- 07. Backrest
- 08. Push Handle
- 09. Safety Lock
- 10. Control Box
- 11. Sling
- 12. Main Unit
- 13. Base Pull Ring
- 14. Power Adapter

- Accessories



IV.Installation Guide

Part List

<div>A</div> <div></div> <div>Backrest</div>	<div>B</div> <div></div> <div>Frame Unit</div>	<div>C</div> <div></div> <div>Legs with Casters</div>
<div>D</div> <div></div> <div>Sling</div>	<div>E</div> <div></div> <div>Power Adapter</div>	

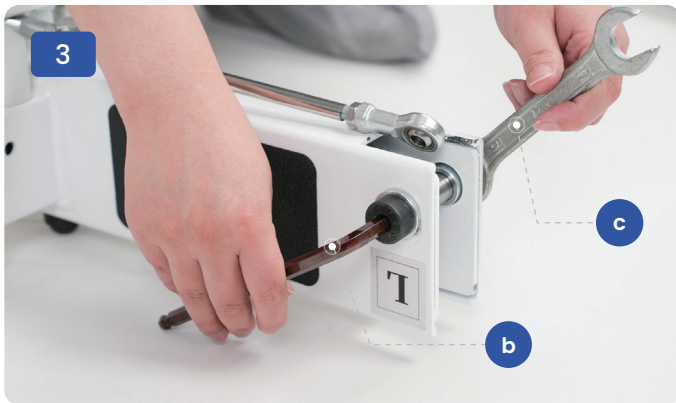
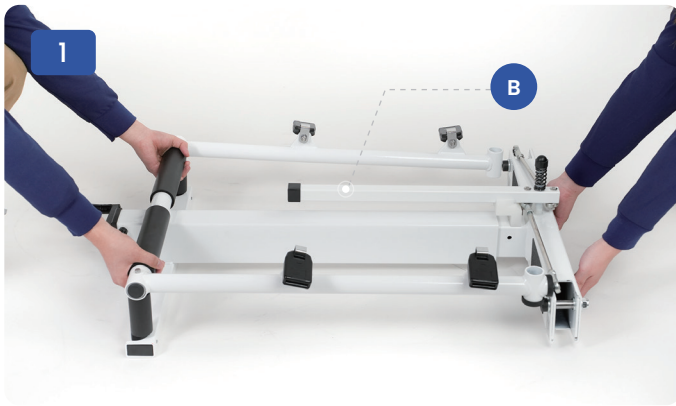
Hardware List and Tools

<div>a</div> <div></div> <div>6mm Hex Wrench (Size 5) x 1</div>	<div>b</div> <div></div> <div>6mm Hex Wrench (Size 8) x 1</div>	<div>c</div> <div></div> <div>19mm Open-End Wrench x 1</div>
--	--	---

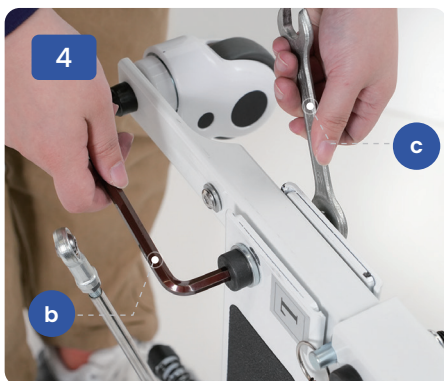
Dear Customer, Before installation, please ensure that all components are complete and free from damage. If you notice any issues, kindly contact us immediately at info@climbingsteps.com. Thank you.

MP-P11 Assembly

Step 1 Remove the pre-installed large bolts from the Frame Unit.



Step 2 Using an 8mm Hex Wrench and a 19mm Open-End Wrench, attach the two Legs with Casters to the Frame.



(Please ensure the left and right legs are installed correctly: L aligns with L, and R aligns with R.)

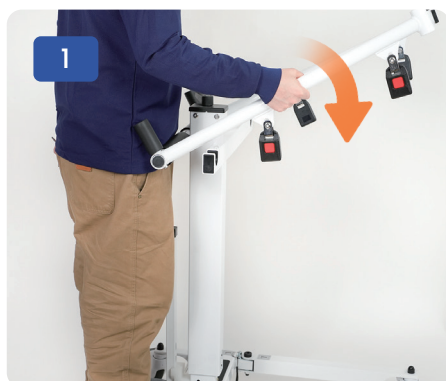
Step 3 Remove the pre-installed screws from the left and right Split Support Legs.



Step 4 Connect the two connecting rods to the base of the frame, assembling them as shown in the diagram.



Step 5 Rotate the armrests to the designated position, attach the Sling, secure the Safety Lock.



Step 6 Install the backrest to complete the assembly.



V. Operating Instructions

1. Hand Controller Instructions



Control Handle

- Once fully charged, the hand controller is ready for use.
- Gently push forward of the handle in the UP direction to adjust to a suitable height, then release and stop the operation

2. Control Box Instructions

- Charging:



Move the device near a power outlet.

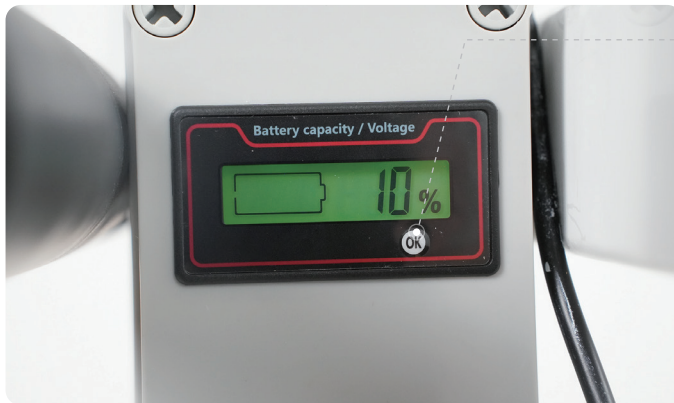


Pull down the dust cap located at the bottom left side of the Control Box.



Connect the Power Adapter to the charging port on the left side of the Control Box.

- **Battery Level Display:**



- Press the OK button to display the remaining battery level on the Control Box screen. Press again to display the voltage. Press a third time to turn off the screen.
- When the battery level drops below 20%, the Control Box will emit a beeping sound as a warning. Turn off the display screen to stop the alarm.
- When fully charged, the device can be used approximately 84 times.

3. Folding Instructions

Step 1 Remove the Backrest.



Step 2 Unfasten the safety Lock on the sling and remove the Sling. Then rotate the Armrests downward.



Step 3 Pull up the pull ring on the left base leg and fold the left leg inward until you hear a click sound. Repeat this step for the right base leg.



Step 4 Lay the device flat.



4. Opening and Closing Instructions



- The Legs can be opened and closed by manually shaking the Leg Spreader Handle.

5. Brake Instructions



The braking operation is performed by pressing the brake pedal on the Rear Casters with your foot.

6. Instructions for Transfer from Bed

1. Lay the user down on their side and position the sling seat cushion next to their hips.
2. Adjust the user to a supine position, ensuring that their hips are aligned with the seat.
3. Assist the user in sitting up and maintaining an upright position, ensuring they are facing the edge of the bed.
4. Position the transfer device correctly, engage the brakes, and ensure the fasteners are securely locked.
5. Install the backrest.

7. Instructions for Transfer to the Vehicle

1. Move the user and the device close to the vehicle.
 2. Adjust the user's seated height so that it aligns closely with the vehicle seat surface.
 3. Insert the device's support legs underneath the vehicle and transfer the user onto the vehicle seat.
 4. Remove the Backrest, unfasten the Safety Lock, and store the MP-P11.
 5. Once the user is transferred into the vehicle, the sling seat cushion does not need to be removed while seated.
- When exiting, simply fasten the Safety Lock on the sling seat cushion, reinstall the Backrest, and proceed with the transfer.

VI. Troubleshooting

Fault Description	Troubleshooting Methods	Contact Us
The machine shakes during lifting or lowering.	<ul style="list-style-type: none"> • Check the lubricant on the main shaft. 	<p>If the issue persists, please feel free to contact us at</p> <p>info@climbingsteps.com</p>
Audible alarm (beep) sounds.	<ul style="list-style-type: none"> • Check the battery level. 	
The machine exhibits wobbling or instability.	<ul style="list-style-type: none"> • Check that all screws are securely tightened. 	
The movement direction of the product is opposite to the direction in which the control handle is toggled.	<ul style="list-style-type: none"> • Inspect the connection cable between the control handle and the control box, ensuring that the up and down arrows are properly aligned. 	

VII.After-Sales Service

After-Sales Contact

• Routine After-Sales Service

If you encounter any of the following issues, please feel free to contact us at info@climbingsteps.com. To ensure optimal service, we will provide an effective solution within 24 hours. Thank you for your support and understanding!

• Scope of After-Sales Service



Missing Parts



Damaged Components



Product Malfunction



Usage Guidance Service

Return and Exchange Policy

If you need to return or exchange your product, please feel free to contact us at info@climbingsteps.com. In support of environmental protection and to reduce unnecessary carbon emissions and resource waste, we kindly ask that you retain and use the original packaging for returns and exchanges. We will provide an effective solution within 24 hours. Thank you for your support and understanding!

To qualify for a return or exchange, please ensure the following conditions are met:

- The product remains in its original packaging and in good condition, without any damage or contamination.
- All accessories, manuals, and other included items are complete and intact.
- A valid proof of purchase is provided.

If the product does not meet these return and exchange conditions, the request will be declined, and any related costs will be the responsibility of the buyer.

Warranty Information

Warranty Period

This product is covered by a 12-month warranty starting from the date of purchase. If any faults arise during the warranty period due to material or craftsmanship issues, we will provide free repair or replacement services.

Warranty Coverage

- The warranty covers the primary functional components of the product, including the Motor, battery.
- The warranty applies only to product quality issues that arise under normal usage conditions and excludes damage caused by human error or misuse.

HOW TO CONTACT US

Reason for Contact:

☐

After-Sales Support

☐

Return and Exchange

☐

Warranty

Product Name / Model Number:

.....

Purchase Platform:

.....

Order Number:

.....

Email:

.....

Issue Description:

.....

Disclaimer

Thank you for choosing our product! To ensure safe and proper use, please read the following disclaimer carefully:

Before using this product, you should thoroughly understand the user instructions and operation methods provided. Any damage or injury caused by improper use or failure to follow the instructions will be your responsibility. By using this product, you acknowledge and agree to assume all risks associated with its operation.

Under normal use and appropriate maintenance, the recommended service life of this device is three years (note that the recommended service life does not constitute a warranty period. The warranty covers defects under normal usage conditions, while the recommended service life represents the expected optimal duration of use for the device).

Our company will not assume responsibility for any damages caused by events including but not limited to war, governmental policies, fire, earthquakes, floods, typhoons, tsunamis, power outages, or strikes. We shall also not be liable for any anticipated benefits, reliance benefits, indirect damages, or special or incidental events (including, but not limited to, economic losses, data loss, or personal injury) resulting from the use of this product.

This product is provided **as is**, without any explicit or implied warranties. Our company does not guarantee that this product will be suitable for all usage scenarios or meet specific user requirements. Please assess this product's suitability based on your own needs before purchase and use.

The warranty services we provide are limited to quality issues inherent to the product itself. You assume all risks and responsibilities during use. For detailed terms of the warranty, please refer to the **Warranty Guide**.

Before using the product, carefully inspect its condition to ensure it is in good working order. If any abnormalities are detected during use, please immediately stop using the product and contact our company or an authorized service provider.

Our company reserves the right to modify, update, and provide final interpretations of this disclaimer. If you have any questions or concerns, please contact customer support for further assistance.

This disclaimer applies to all users who purchase and use our products. By using this product, you acknowledge and accept the terms of the above disclaimer.



FREEDOM EVERYLIFT

EVERYDAY TRANSFER AID

If you have any questions, please contact us:

Email: info@climbingsteps.com

Service Hotline: +1 (212) 366-5483