

Mimitakara[®]

Made for

iPhone | iPad



goHearing R1

User Guide

WELCOME	P 1
YOUR HEARING DEVICE	P 2
ACCESSORIES	P 3
FEATURES	P 4
BATTERIES	P 5
GETTING STARTED	P 8
EARBUDS AND TUBES	P 10
PAIR AND CONNECT	P 13
CONTROL YOUR HEARING DEVICE	P 18
SAFETY AND MAINTENANCE	P 24
WARRANTY	P 26
TROUBLESHOOTING	P 27
ADDITIONAL INFORMATION	P 29

WELCOME

Thank you for choosing our hearing devices to accompany you through everyday life.

Like anything new, it may take you a little time to become familiar with them.

This guide will help you understand the advantages and greater quality of life your hearing device offer. To receive the most benefit from your hearing device, it is recommended that you wear them every day, all day.

This will help you get adjusted to them.

CAUTION

It is important to read this user guide thoroughly and completely. Follow the safety information to avoid damage or injury.

The devices are not intended for children under the age of 3 years or people with a developmental age of under 3 years.

YOUR HEARING DEVICE

Your hearing aids are Mimitakara

RIC (Receiver-in-Canal) models

Device: goHearing R1

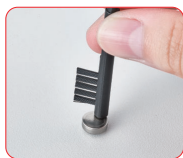
The goHearing R1 connect to iPhone, iPad so you can stream audio, answer phone calls, adjust settings, and more.

To use the goHearing R1, you need one of these devices:

- iPhone 5s and later
- iPad Pro 9.7-inch and later
- iPad Air and later
- iPad mini 2 and later
- iPad (5th generation) and later

ACCESSORIES

- ① Hearing Aid (Left - Blue) x1
- ② Hearing Aid (Right - Red) x 1
- ③ Earbuds: Open style x6 / Closed style x6
- ④ Battery x2
- ⑤ Storage Case x1
- ⑥ Cleaning Brush x1






Magnet helps remove
and insert battery



Loop helps clean out ear wax

FEATURES



	Closed style S/M/L size
	Open style S /M size
	Open style L size

BATTERIES

When the battery is low the sound becomes weaker or you will hear an alert signal. The battery type will determine how long you have to replace the battery.

Battery size and handling tips

Ask your Hearing Care Professional for recommended batteries.

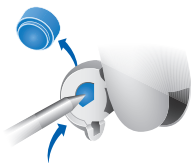
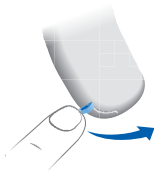
Battery size: 13

- Always use the correct battery size for your hearing aids.
- Remove the batteries if you intend not to use the hearing aids for several days.
- Always carry spare batteries.
- Remove empty batteries immediately and follow your local recycling rules for battery disposal.

Replacing batteries

Removing the battery :

- Open the battery compartment.
- Remove the battery hand.



Inserting the battery :

- If the battery has a protective film, remove it only when you are ready to use the battery.
- Insert the battery with the "+" symbol facing upwards.



- Carefully close the battery compartment. If you feel resistance, the battery is not inserted correctly. Do not attempt to close the battery compartment by force. It can be damaged.

Daily use

Turning on and off

You have the following options to turn your hearing aids on or off.

Via battery compartment :

- Turning off :

Open the battery compartment fully.

- Turning on :

Close the battery compartment.



The hearing aid turn on after a delay of several seconds. During this time you can insert the hearing aid into your ears without experiencing unpleasant feedback whistling.

GETTING STARTED

Make sure your ears are clean.

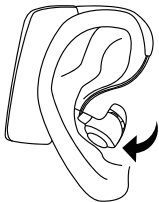


Rest your hearing aid securely on your ear .



Place the earbud inside the ear canal until it sits soundly and comfortably with a tight seal in your ears.

Make sure the earbud tips fit your ears (change the earbud size if it's too tight or too loose).



4. Open and close your mouth to avoid accumulation of air in the ear canal. Carefully push the earbud into the ear canal and twist it slightly until it sits well.

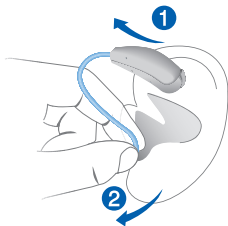


5. Place the retainer into the outer part of your ear so it follows the contour of the ear. If the retainer is visibly sticking out from your ear it has not been positioned correctly.



Removing a hearing aid

- Lift the hearing aid and slide it over the top of your ear ①.
- Hold the tube close to the earbud and pull the earbud out carefully ②.



EARBUDS AND TUBES



Open Style

Suitable for mild hearing loss. It has openings for sound to pass through from outside of the hearing aid. It can sound more natural for some people but feedback may occur when the volume is turned to upper level.



Closed Style

Suitable for moderate to severe hearing loss. It completely closes the ear canal, helping to block minor external sounds and greatly enhance the sound of your hearing aids. Feedback may not occur when the volume is turned to upper level. Some people with small/narrow ear canal may feel a little bit stuffy.

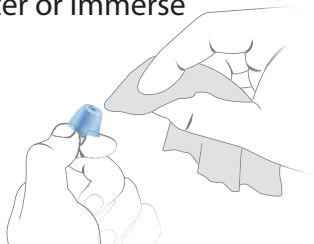
There are three sizes of earbuds Large, Medium and Small 1/each. Select the size that fits most comfortably in your ear.

Cerumen (ear wax) may accumulate on the earbud. This may affect sound quality. Clean the earbuds daily.

- For hearing aids with a standard earbud:
Exchange the earbuds approximately every three to six months, or sooner if you notice cracks or other changes. Ask your Hearing Care Professional to clean the tubes or to exchange tubes as needed.
- For hearing aids with custom-made earbud:
Ask your Hearing Care Professional to clean the tubes or to exchange the earbuds and tubes as needed.

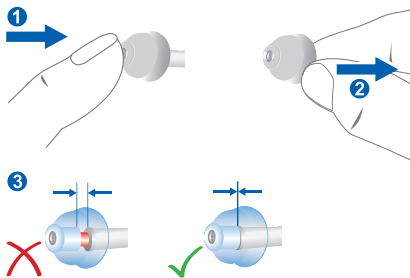
Cleaning earbuds :

- Clean the earbud upon removal with a soft and dry tissue. This prevents cerumen becoming dry and hardening.
- Never use running water or immerse the earbud in water.



Exchanging standard earbud :

- Pull off the used earbud and plug on the new earbud.

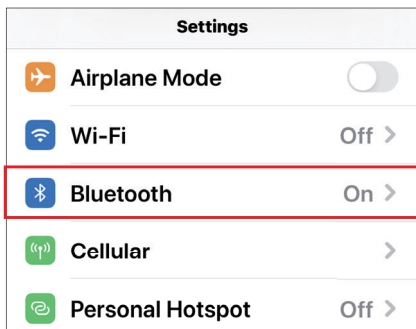


PAIR AND CONNECT

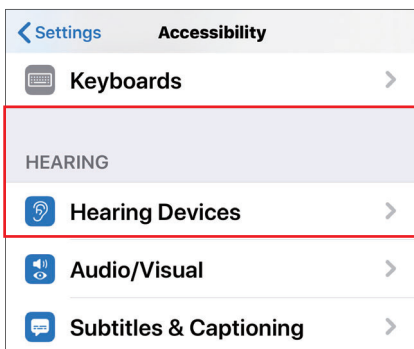
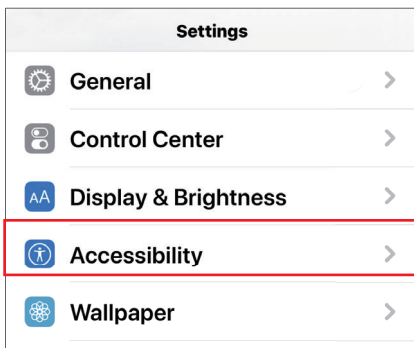
When you pair goHearing R1 to your Apple device, audio from your Apple device goes to your hearing device. Should the Bluetooth be disconnected due to range or any other reason, reconnect the goHearing R1 with the device that you wish to pair with.

To pair your hearing device, follow these steps

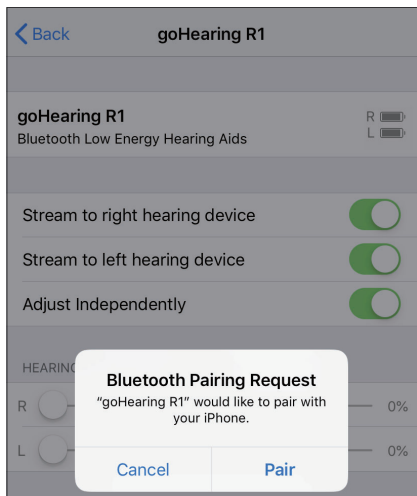
1. Make sure that Bluetooth is ON in your Apple device. Go to Settings, and select Bluetooth.



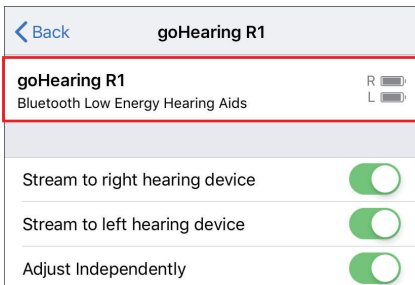
2. Go to Settings > Accessibility > Hearing > Hearing Devices.



3. Your Apple device will search for your hearing device. Under MFi Hearing Devices, tap the device name **goHearing R1**.
4. Tap Pair when you see the pairing request on the screen. If you have two hearing devices, you'll get two requests. Pairing could take up to a minute.



You can start using your goHearing R1 when you see it under MFi Hearing Devices.



Pair with more than one device

When you pair your goHearing R1 with more than one Apple device, the connection for your hearing devices switches from one device to the other when you use audio. The connection also switches when you receive a call on your phone. If you make changes to your hearing device settings on one device, they're sent to your other devices.

To pair with another iPhone, iPad, follow these steps:

1. Make sure all devices are connected to the same Wi-Fi network and signed in to iCloud with the same Apple ID.
2. Follow the steps for how to pair your hearing device.

Scan the QC code and follow the step by step guide (<https://support.apple.com/en-us/HT201466>)



CONTROL YOUR HEARING DEVICE

You can use your Apple device to select environment presets adjust the volume, turn on Live Listen, and more. To control your hearing device, use Settings or the Accessibility Shortcut.

Set preferences for features that you control with your Apple device by going to:

Settings > Accessibility > Hearing Devices

Then tap Hearing Devices

Play Ringtones

You can play ringtones through connected hearing devices.

Audio Routing

Choose the default device for audio playback.

Control Nearby Devices

Use your Apple device to adjust the settings of hearing devices that are on the same WiFi network and connected to your iCloud account.

Audio Handoff

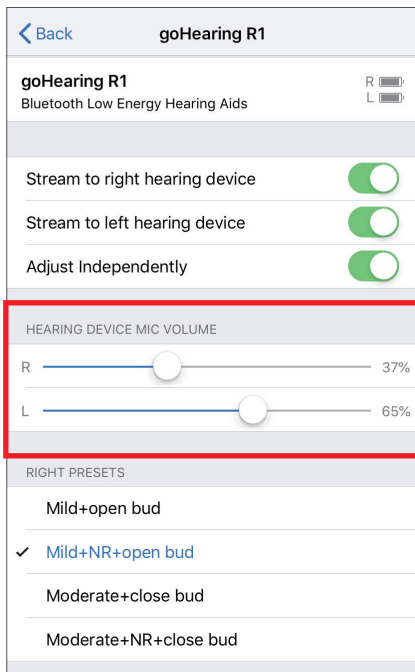
Continue listening to media through your hearing device when you switch between your Apple devices. For example, if your hearing device is connected to your iPhone but you start watching a movie on your iPad, the hearing device automatically switches to the iPad.

Control on Lock Screen

Quickly make preset and volume adjustments on your hearing device right from the Lock Screen with the Accessibility Shortcut or Control Center hearing button.

Tap the device name goHearing R1 in Settings

- Adjust volume levels for either or both hearing devices.



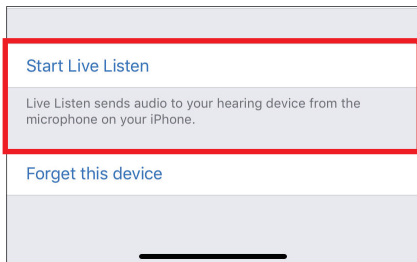
- Select environment presets

RIGHT PRESETS	
Mild+open bud	①
✓ Mild+NR+open bud	②
Moderate+close bud	③
Moderate+NR+close bud	④
LEFT PRESETS	
Mild+open bud	
✓ Mild+NR+open bud	
Moderate+close bud	
Moderate+NR+close bud	

- ① Mild hearing loss + Open style earbud
- ② Mild hearing loss + Noise reduction + Open style earbud
- ③ Moderate hearing loss + Closed style earbud
- ④ Moderate hearing loss + Noise reduction + Closed style earbud

● Turn On/Off Live Listen

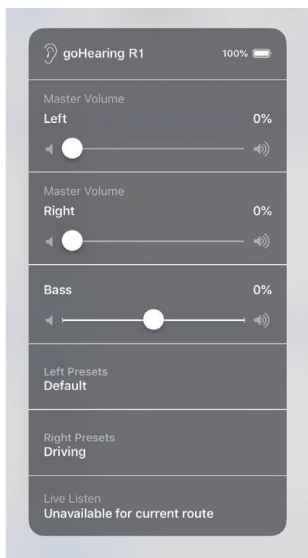
With Live Listen, your Apple devices become a remote microphone that sends sound to your goHearing R1. Live Listen can help you hear a conversation in a noisy room or hear someone speaking across the room.



1. Tap Start Live Listen (Turn ON)
2. Place the device in front of the person you want to hear
3. Tap End Live Listen (Turn OFF)

Use the Accessibility Shortcut

You can also use the Accessibility Shortcut to turn Live Listen on and off or control other features of your goHearing R1. To use the Accessibility Shortcut, quickly press the Home button three times. On iPhone X and later, triple-click the side button.



※ The interface may vary with iOS version

SAFETY AND MAINTENANCE

Battery Maintenance

- Open the battery door at night.
- Keep the batteries in a cool dry place.
- Remove the batteries if you intend not to use the hearing aids for several days.

Earbud Maintenance

- Clean your ears thoroughly before inserting the earbuds into your ears.
- After each use remove all remaining debris from the earbuds.
- Ensure that the hole on the side of the bud is also free from any debris.

- Use the provided cleaning brush to clean any earwax adhered on the device, especially in and around the device and the earbud.

Safety Information

- Keep the device out of reach from children
- Do not attempt to open, fix, replace or remove any of the components.
- Avoid excessive volume levels and prolonged periods of use.
- Avoid using the device while you are sleeping
- Keep device in dry areas.
- Keep the device away from high temperature areas.
- Avoid liquid near the device.
- Avoid discharging the battery for long periods
- Keep away from direct sunlight.

WARRANTY

Mimitakara comes with one-year limited warranty. During this warranty period, from the date of purchase by the original customer, we warrant goHearing R1 to be free from defects in material and workmanship under intended home use in the event goHearing R1 fails to function properly due to defects in material or workmanship within one year of original purchase.

Contact our customer service center by email and return the unit with proof of sales purchase receipt or packing slip with no exception to the address given by the customer service agent.

Mimitakara will either repair or replace the unit (with a refurbished unit or a unit of equal condition) and return it to you at no cost to you (there will be a nominal additional shipping charge for remote countries).

TROUBLESHOOTING

Problems and solutions

Sound is weak

- Increase the volume
- Replace the empty battery
- Clean or exchange earbuds

Hearing devices emit whistling sound

- Replace with proper size of earbud that fits you best
- Reinsert the earbud into the ear until it fits securely
- Check whether the earbuds connected correctly
- Decrease the volume
- Clean or exchange the earbuds

Sound is distorted

- Decrease the volume
- Replace the empty battery
- Clean or exchange the earbuds

Hearing device doesn't work

- Replace the empty battery
- Clean or exchange earbuds

ADDITIONAL INFORMATION

Users usually take a few weeks to become familiar with their hearing aid. You need to practice repeatedly until your brain adapt to the sounds transmitted by the hearing aid and adjust it to suit your lifestyle. Hearing is a part of senses that help us sharing ideas and plans; lip reading, facial expression and gesture that help us practice better.

Notes to Friends and Family

1. Remind users to be focused before conversation.
2. Let users look at you when having conversation in a quite place.
3. Speak clearly and slowly at a normal volume, speak loudly makes understanding harder.
4. Do not repeat your phrases if users can't hear

them clearly, try another phrases with the same meaning for better understanding.

Notes to Users

1. Close to the speaker and be concentrated.
2. Speak in quiet places and sit face to face with the speaker.
3. Try different position, find the position that you can hear better.
4. The background noise might make you feel uncomfortable, be patient and try to get the information when the noise is lower.
5. Tell people what you need, people without hearing loss can't see your hearing difficulty.
6. Have appropriate expectation and understand that hearing aid have its own limit.
7. Using hearing aid is a learning process of desire for improvement, patient and repeated practice.

Made for Apple badge only

Use of the Made for Apple badge means that an accessory has been designed to connect specifically to the Apple product(s) identified in the badge and has been certified by the developer to meet Apple performance standards. Apple is not responsible for the operation of this device or its compliance with safety and regulatory standards.

Credit Line

Apple, Apple TV, Apple Watch, iPad, iPad Air, iPad Pro, iPhone, and Lightning are trademarks of Apple Inc., registered in the U.S. and other countries. tvOS is a trademark of Apple Inc.



