

Health o meter[®]
P r o f e s s i o n a l

Model 2210CART-AC Neonatal / Pediatric Scale Cart



User Instructions

PELSTAR, LLC 9500 West 55th St. McCook, IL 60525-7110 USA www.homscales.com

Health o meter[®] Professional 2210CART-AC

© Pelstar, LLC 2023

weigh**easier**[®]

Health o meter®

P r o f e s s i o n a l

Health o meter® Professional 2210CART-AC

Thank you for your purchase of this Health o meter® Professional product. Please read this manual carefully, and keep it for easy reference or training.

TABLE OF CONTENTS

Cautions and Warnings	3
Specifications	3
Certifications	3
Assembly Instructions	4
Transportation Instructions	7
Maintenance.....	7
Warranty.....	8

Please register your product for warranty coverage at:

www.homscales.com

For User Instructions updates and revisions please go to:

www.homscales.com

CAUTIONS AND WARNINGS

To prevent patient/caregiver injury, please follow the instructions in this user manual very carefully.

- Do not exceed recommended weight limit of 77 lb / 35 kg for this cart.
- Do not use in the presence of flammable or explosive materials.
- Lock wheels when in storage or during a weighing event.
- If the cart becomes damaged, do not operate cart until properly serviced.
- Follow instructions and exercise caution during assembly.

Patient/caregiver safety

- Do not transport patients on the cart.
- Lock the wheels when weighing a patient.
- To prevent patient injury, the patient must be attended throughout the entire weighing event.

In no event shall Pelstar, LLC be liable for damages or injuries whatsoever arising out of or connected with the assembly, use, or misuse of its products.

SPECIFICATIONS

Intended Use

The 2210CART-AC neonatal/pediatric scale cart is intended for use in a professional medical setting to transport neonatal/pediatric tray scales or other medical devices and supplies. It is not intended for patient transfer. The cart employs a proven and rugged mechanical design with anti-static wheels, casters with locks, and built-in handles. It features a top shelf, providing a stable and level surface area for repeatable weight measurements and a secure fit for the 2210KL-AM series of neonatal/pediatric scales.

2210CART-AC Specifications

Capacity:	77 lb (35 kg)		
Physical Dimensions:	Base Width: 18.6"/472mm Depth: 22"/559mm Height: 35.1/892mm	Top Shelf Width: 30"/762mm Depth: 17.6"/447mm	Storage Area Width: 21.3"/541mm Depth: 13"/330mm Height: 2.9"/74mm

CERTIFICATIONS

**ISO13485:2016
CERTIFIED**

**ISO 9001:2015
CERTIFIED**

Pelstar, LLC has been officially certified as the manufacturer of Health o meter® Professional medical devices. The Pelstar, LLC quality assurance system covers the development, production, sales and service of medical scales and measuring systems.

ASSEMBLY INSTRUCTIONS

Before Assembly

Each 2210CART-AC neonatal/pediatric scale cart is shipped disassembled. Carefully inspect the carton for shipping damage before unpacking. If damage is found, contact your shipper or a Health o meter® Professional representative immediately. Claims must be filed with the shipper as soon as possible after receipt of the package. The following information details what you will find inside the main carton as you unpack the cart.

To prevent scratching any components and avoid damaging the cart when unpacking, do not use a box cutter, knife, scissors, or any sharp object to open the protective inner packaging. Carefully remove assembly from the carton and unwrap the packing materials. Set the carton aside for storage.

Parts List

Hardware:

- (4) socket head cap screws
- (4) flat head hex screws
- (4) hex nuts

Cart Pieces:

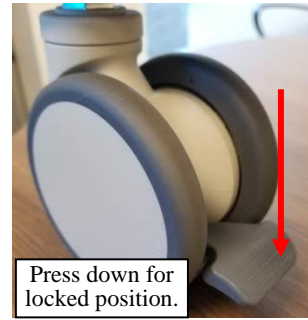
- (1) Wheeled base
- (1) Pillar
- (1) Shelf mounting plate
- (1) Top Shelf

Tools:

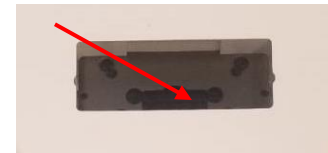
Allen wrenches to be used during assembly

ASSEMBLY INSTRUCTIONS (CONT.)

1. Remove the wheeled base from the carton and place on a flat surface.
Note: Elevating the base on a table may provide easier access to the underside when tightening the pillar bolts.
Caution: Lock the wheels to ensure the cart stays in place during assembly.



2. Obtain the pillar from the carton. Place the black end of the pillar into the base. Ensure the rectangle shaped hole in the pillar end and the base are aligned.



3. Obtain the four socket head cap screws and insert through the bottom of the base and into the pillar. Use the included Allen wrench to tighten the screws into the base. Note: Do not completely tighten until all four screws are inserted.

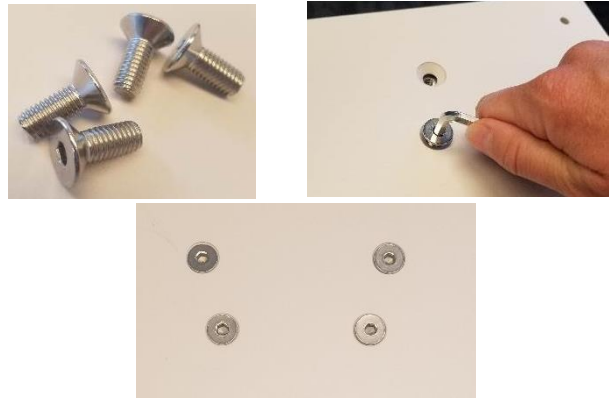


4. Obtain the shelf mounting plate from the carton and align onto the top of the pillar. Ensure the holes in the plate are aligned with the holes in the pillar.

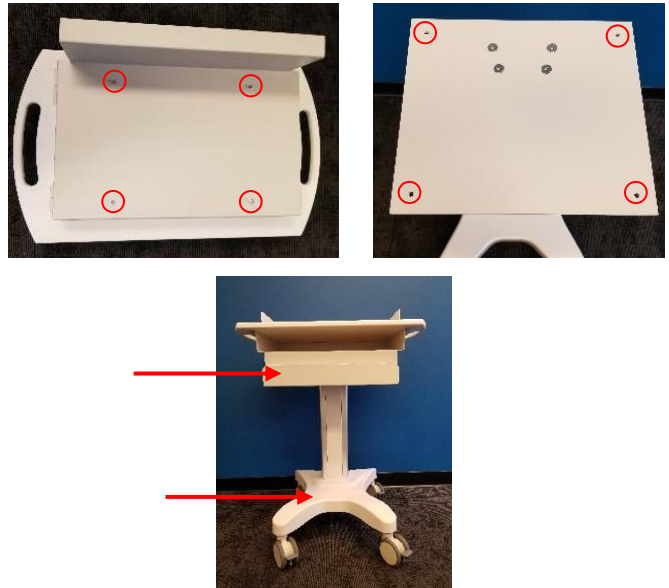


ASSEMBLY INSTRUCTIONS (CONT.)

5. Obtain the four flat head hex screws and insert through the mounting plate and into the pillar. Use the included Allen wrench to tighten the screws. Ensure the top of all four screws are completely flat and flush with the mounting plate. Note: Do not completely tighten until all four screws are inserted.



6. Obtain the shelf from the carton. Align the shelf onto the mounting plate and pillar. The four studs on the bottom of the shelf will slide into the four holes on the top of mounting plate. Ensure the front of the shelf is positioned over the longer part of the base, as shown.



7. Obtain the four hex nuts. Place onto the stud underneath the shelf and tighten using the included crescent wrench. The cart is now assembled.



8. Gently place the product onto the shelf. The handles on the side of the product fit exactly around the slats on top of the shelf to secure the product into place.

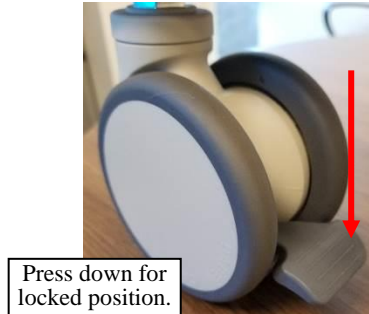


TRANSPORTATION

Warning: Never use the cart to transport a pediatric patient.

Wheel Locks

To prevent unintended cart movement, engage the wheel locks by pushing down on the lock lever as shown. To disengage the locks, lift the lever up.



MAINTENANCE

Follow the instructions below for maintenance and cleaning of the 2210CART-AC. Maintenance operations other than those described in this manual should be performed by qualified service personnel only.

MAINTENANCE

Before first use and after periods of non-use, check the cart for proper operation. If the cart does not operate correctly, refer to qualified service personnel.

1. Check overall appearance of the cart for any obvious damage or wear.
2. Do not store near chemicals, heaters, or radiators.
3. Periodically inspect the wheels and locks. Remove all foreign material picked up by the wheel/locks.

CLEANING AND DISINFECTING

1. Health o meter® Professional recommends using one of the following solutions on a soft cloth or disposable wipe:
 - mild soap and water solution
 - 70% isopropyl alcohol
 - solution with 1-5% hydrogen peroxide concentration

After cleaning/disinfecting, wipe with a cloth dampened with water and then with a clean dry cloth. To avoid residue build-up or damp surfaces, ensure all parts are completely dry after cleaning.

2. Never use rough or abrasive materials to clean the cart.
3. Do not submerge the cart in water or any other liquid.
4. Do not pour or spray fluids directly on the cart.

WARRANTY

2-Year Limited Warranty

What does the Warranty Cover?

This Health o meter® Professional product is warranted from date of purchase against defects of materials or in workmanship for a period of two (2) years. If the product fails to function properly, return the product, freight prepaid and properly packed to Pelstar, LLC (see "To Get Warranty Service", below, for instructions). If the manufacturer determines that a defect of material or in workmanship exists, the customer's sole remedy will be replacement of the product at no charge. Replacement will be made with a new or remanufactured product or component. If the product is no longer available, replacement may be made with a similar product of equal or greater value. All replaced parts are covered only for the original warranty period.

Who is Covered?

The original purchaser of the product must have proof of purchase to receive warranty service. Please save your invoice or receipt. Pelstar dealers or retail stores selling Pelstar products do not have the right to alter, or modify or any way change the terms and conditions of this warranty.

What is Excluded?

Your warranty does not cover normal wear of parts or damage resulting from any of the following: negligent use or misuse of the product, use contrary to the operating instructions, abuse including tampering, damage in transit, or unauthorized repair or alternations. Further, the warranty does not cover natural disasters, such as fire, flood, hurricanes and tornadoes. This warranty gives you specific legal rights, and you may also have other rights that vary from country to country, state to state, province to province or jurisdiction to jurisdiction.

To get Warranty Service make sure you keep your sales receipt or document showing proof of purchase. Call (+1) 800-638-3722 or (+1) 708-377-0600 to receive a return authorization (RA) number, which must be included on the return label. Attach your proof of purchase to your defective product along with your name, address, daytime telephone number and description of the problem. Carefully package the product and send with shipping and insurance prepaid to:

Pelstar, LLC
Attention R/A# _____
Return Department
9500 W. 55th St.
McCook, IL 60525



PELSTAR, LLC

9500 West 55th St. McCook, IL 60525-7110 USA

1-800-638-3722 or 1-708-377-0600

PLEASE REGISTER YOUR PRODUCT FOR WARRANTY COVERAGE AT:

www.homscales.com

Health o meter® is a registered trademark of Sunbeam Products, Inc. used under license.

Health o meter® Professional products are manufactured, designed, and owned by Pelstar, LLC.

We reserve the right to improve, enhance, or modify Health o meter® Professional product features or specifications without notice.

© Pelstar, LLC 2023